

# DAMPA **SUSTAINABLE** metal ceiling solutions

# OUR SUSTAINABILITY PHILOSOPHY

DAMPA develops and produce innovative ceiling solutions for architects and building developers worldwide.

Besides the ceilings' exceptional acoustic properties, we collaborate with innovative partners within lighting, temperature control and ventilation to create the perfect synergy between function and design.

We know the industry and our company is effecting our planet. In everything we do we therefore have a high focus to improve the world we live in, this both for us humans, the society and the environment.

***Today we have a highly sustainable product, however we continuously work to deliver an improved sustainable product in both for the environment and every person's well-being.***

The future depends on our present actions. This is why we must think regenerative design into the production- and building process.

Our suppliers of raw material are regional and all have a strong sustainability profile.

As a minimum 80% of the aluminium that is used for our ceiling systems are from recycled material. Furthermore, all internal metal waste is collected and recycled.

Our ceiling solutions are delivered as prefabricated systems, which eliminates waste during the building process.

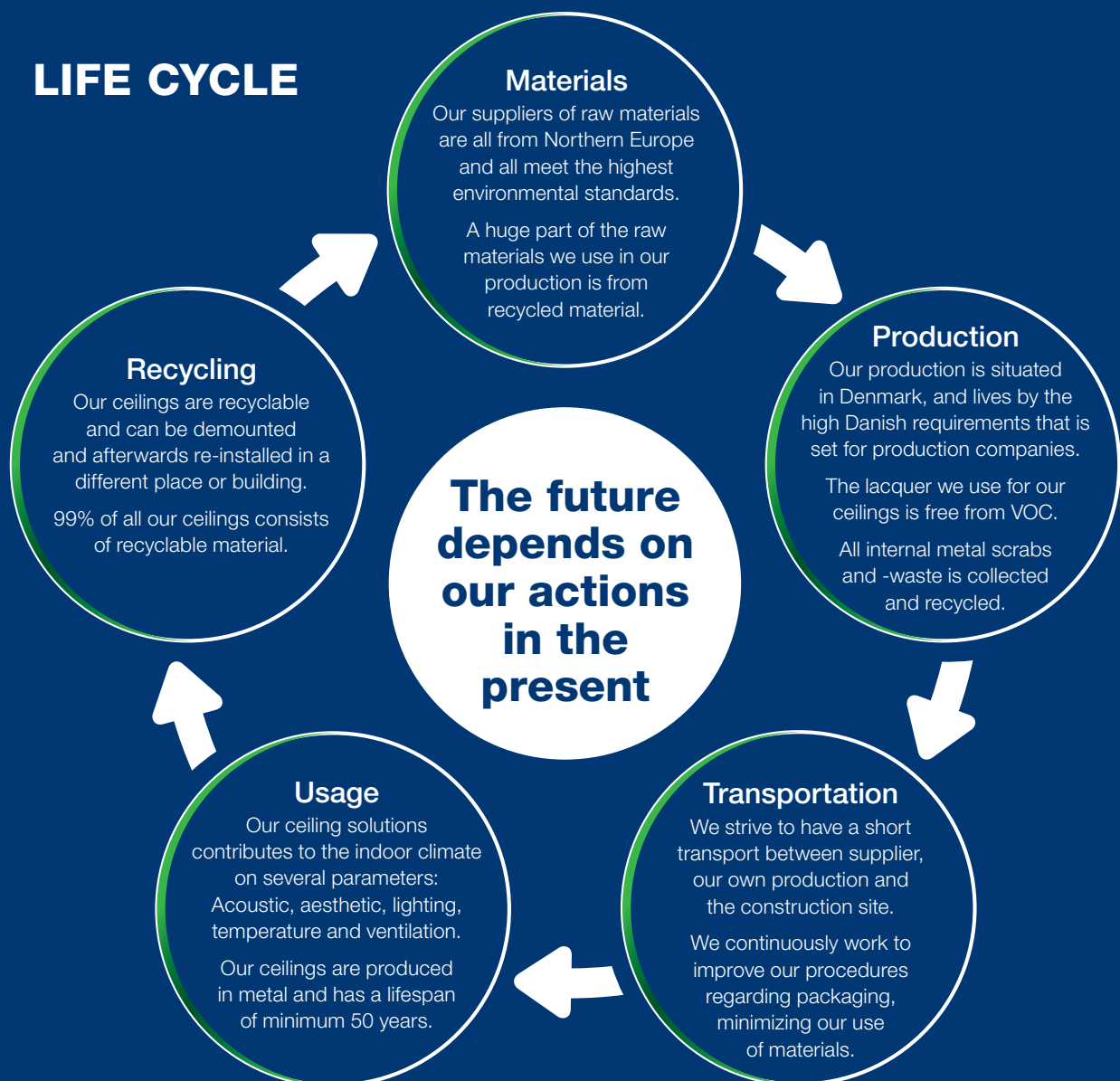
The ceilings consists of up to a 100% recyclable material and has a lifespan of minimum 50 years.

As a climate conscious partner we contribute to certified building projects.

We have obtained environmental product declarations, EPD's, on all our products including our steel, aluminium and climate ceilings.

The declarations are verified from IBU according to the european standard CEN EPD EN 15804 ISO 14025 and be used for both DGNB, LEED and BREEAM.

## LIFE CYCLE



# HOW DAMPA CONTRIBUTES TO THE CERTIFICATIONS

## Recycling

We make sure that the metal we use for our ceilings, has a large share of recycled material, not compromising the quality.

We buy our materials from suppliers with a high environmental- and sustainable profile.

We make sure that construction developers and planners has the necessary data to achieve the certification.

## Energy efficiency

With our ceiling integrations there can be achieved large energy savings.

DAMPA LED can save up to 60% energy compared to traditional lighting.

A climate ceiling with cooling- and heating properties can save up to 25% in energy.

Diffuse ventilation through the ceiling can also contribute to large energy savings.



## Long lifespan

When maintaining our ceilings correctly they have an exceptional long lifespan of minimum 50 years.

This has a positive contribution to our environment and the total economy.

## Proximity

The certifications also take the distance between the production and the construction site into account.

## Surfaces and lacquering

Both our own powder-lacquer and the lacquer our suppliers use are free from VOC and CFC.

## Visual comfort

The DAMPA ceilings are aesthetic and has an eminent durability in terms of functionality.

DAMPA LED contributes to the right artificial lighting, with possibilities of adjustment.

## Thermal comfort

Both summer and winter our climate ceilings contributes to a perfect thermal indoor climate, as the ceiling secure comfort for every person in the room.

## Acoustic comfort

The acoustic qualities in products from DAMPA contributes to a good acoustic indoor climate. It is an important factor for well-being and comfort.

## Documentation

We have obtained EPD's that support all our products and secures that the constructor and planner gets all necessary data to achieve the certifications.



## BUILDING CERTIFICATIONS



### LEED®

The American certification LEED® (Leadership in Energy and Environmental Design) can be used for commercial as well as private building projects and infrastructure.

LEED® is an assessment of if the building meets the high standards in categories such as energy- and water consumption, the use of environmental friendly and regional produced building materials and comfort of the room.

There are four levels of LEED® certifications: Certified, silver, gold and platinum.



### BREEAM®

(Building Research Establishment Environmental Assessment Method) is one of the most used certification systems for sustainable constructions.

BREEAM® can be used for commercial and private constructions and infrastructures.

Both new and old buildings can be certified from this system. The system evaluates both global, regional, local and indoor effect in categories such as energy, water, health, well-being and materials.

There are five levels of BREEAM®: Passed, good, very good, excellent and exceptional.



### DGNB

The German DGNB-certification is one of the most common in Denmark.

It is a holistic system of certification, which focuses on the whole life cycle of the building. It incorporates environmental, economical, sociocultural, technical and process oriented factors.

DGNB uses several chosen criterias to assess in which degree a building meets the requirements of sustainable use of materials, acoustics, visual comfort and alike.

There are three levels of DGNB certifications: Silver, gold and platinum..



# DAMPA AND THE UN SUSTAINABLE DEVELOPMENT GOALS

At DAMPA we work with the UN sustainable development goals. More specific we have chosen to focus on:



## Goal 12

*Target 12.5 - By 2030, substantially reduce waste generation through prevention, reduction, recycling and reuse.*

We contribute to this goal, by producing ceilings with an exceptional long documented lifespan of minimum 50 years. By installing a robust ceiling with a long lifespan, the overall amount of waste is reduced.

80% of the aluminium we use in our production, is recycled material and all waste from our production is gathered and recycled.

We work to continuously improve our production in sustainable ways.

We work to reduce the amount of waste related to shipments, by always searching for alternatives, which can be recycled or contribute to less overall waste.

We take part in a scale-up project with the focus of making our order-flow more efficient, which will contribute to minimizing waste.



DAMPA, DK-5690 Tommerup, Tel.: +45 63 76 13 00, [dampa@dampa.dk](mailto:dampa@dampa.dk), [www.dampa.com](http://www.dampa.com)