



# DAMPA® Clip-In Tile

Highly flexible and creative

**DAMPA®**  
Quiet Danish Design



# DAMPA® Clip-In Tile Square Edge



## CREATE A “BORDERLESS” CEILING SURFACE

The DAMPA® Clip-in Tiles with sharp edge presents a continuous, uniform and “borderless” ceiling surface look, with precise levelling of the sharp edged tiles.

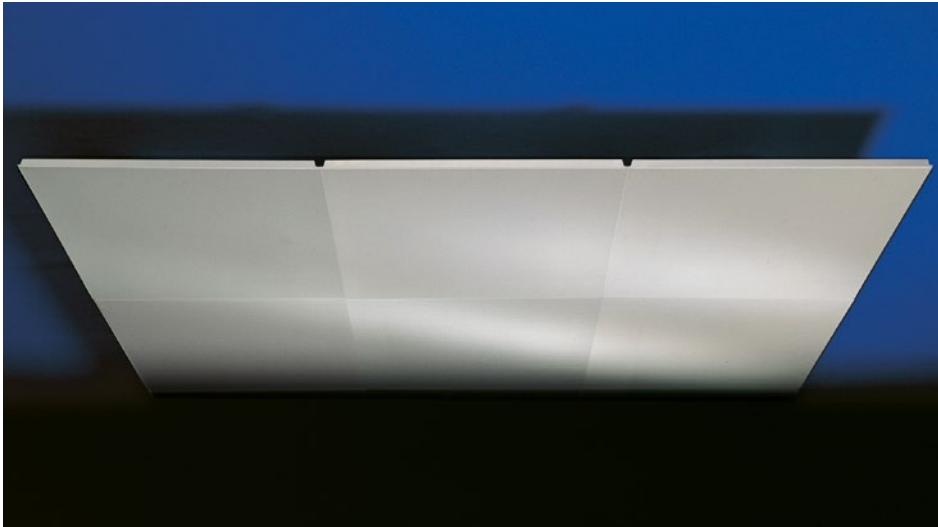
Create the impression of a “non-modular” ceiling, by applying perforation exceeding the edge of the tile. Enhance the continuity layout further by installing unperforate tiles.

DAMPA® Clip-in Tiles with sharp edge is ideal in areas where uniformity and seamlessness is desired.



# Design

Precise levelling of the sharp edged tiles creates a flat, uniform and “borderless” ceiling surface



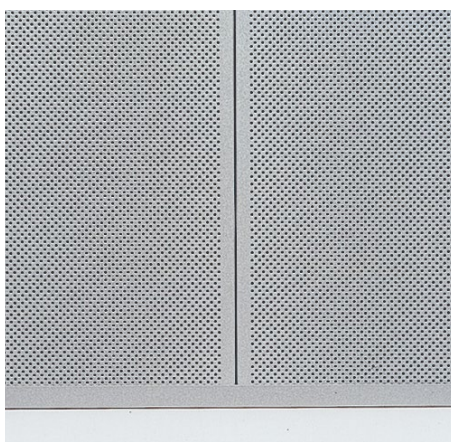
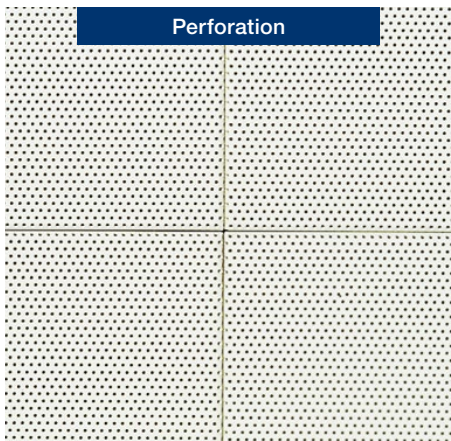
## Design

The impression of a “non-modular” ceiling is achieved by installing unperforated tiles or tiles with perforation around the edges in the concealed suspension system.

The selected colours of the tiles and of the acoustic felt inlay combined with different perforation patterns offer innumerable design capabilities.

## Material

The tiles are produced on a tile press plant securing uniformity. They are available in steel or aluminium. For installation in areas with high humidity, aluminium is recommended.



## Acoustic Felt

The combination of perforation and acoustic felt bonded to the reverse side of the tiles contributes to optimal acoustics.

The acoustic felt prevents any dust fall-out from perforated tiles.

The acoustic felt is black as standard and available in colours on request.

## Suspension System

In the concealed suspension system the tiles are secured to the carriers – without the use of tools.

## Colours

With a choice of tiles in a specific colour or in a combination of different colours, the ceiling surface becomes part of the interior design.

## Integrated System

Lighting and ventilation for the tiles are designed as integral parts of the ceiling.

## Modules

The tiles with square edge are supplied in modules of:

300 × 300 mm

300 × 600 mm

500 × 500 mm

600 × 600 mm

## Dismantling

It is possible to remove and reinstall individual tiles anywhere in the ceiling by using a simple dismantling tool.

## Quality

The tiles are produced to DAMPA's Quality Management System.

## Perforation

Various hole sizes and perforation patterns in combination with the coloured acoustic felt add an extra dimension to the appearance of the ceiling.



# DAMPA® Clip-In Tile Bevelled Edge



## EMPHASIZE THE SQUARE FEATURE OF THE CEILING

The special design feature of DAMPA® Clip-In Tiles with bevelled edge is the emphasis of the square shape, by highlighting the joints between each tile.

Creative combinations with various standard tiles offer the possibility of individual designs, which mean that “the sky is the limit” regarding possible solutions to your building project.



# Design

DAMPA® Clip-In Tiles are part of a complete ceiling system with concealed suspension system

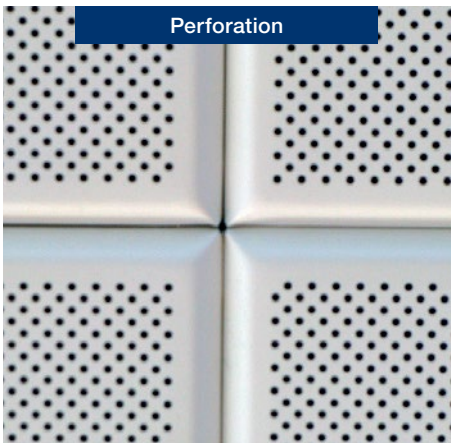


## Design

The concealed suspension system eases installation through the “clip-in” system, which requires no installation tools for installation of the tiles.

In case of the need to gain access to above ceiling installations, it is possible to dismount the tiles with the appropriate DAMPA dismount tool.

The selected colours of the tiles and of the acoustic felt inlay combined with different perforation patterns offer innumerable design capabilities.



## Perforation

Various hole sizes and perforation patterns in combination with the coloured acoustic felt add an extra dimension to the appearance of the ceiling.



## Acoustic Felt

The combination of perforation and acoustic felt bonded to the reverse side of the tiles contributes to optimal acoustics.

The acoustic felt prevents any dust fall-out from perforated tiles.

The acoustic felt is black as standard and available in colours on request.

## Colours

With a choice of tiles in a specific colour or in a face becomes part of the interior design.

## Suspension System

In the concealed suspension system the tiles are secured to the carriers – without the use of tools.

## Dismantling

It is possible to remove and reinstall individual tiles anywhere in the ceiling by using a simple dismantling tool.



## Modules

All tile modules are installed in the same suspension system extending the number of creative combinations.

Aluminium and steel tiles are supplied in modules of:

- 300 × 300 mm
- 300 × 600 mm,
- 600 × 600 mm
- 500 × 500 mm.

Additionally, aluminium tiles are supplied in modules of 24 × 24 inch.

## Quality

All DAMPA Ceiling Systems are manufactured, to high standards within close tolerances to ensure accurate, fast and reliable installation. The DAMPA Ceiling Systems are produced according to DAMPA's Quality Management System.



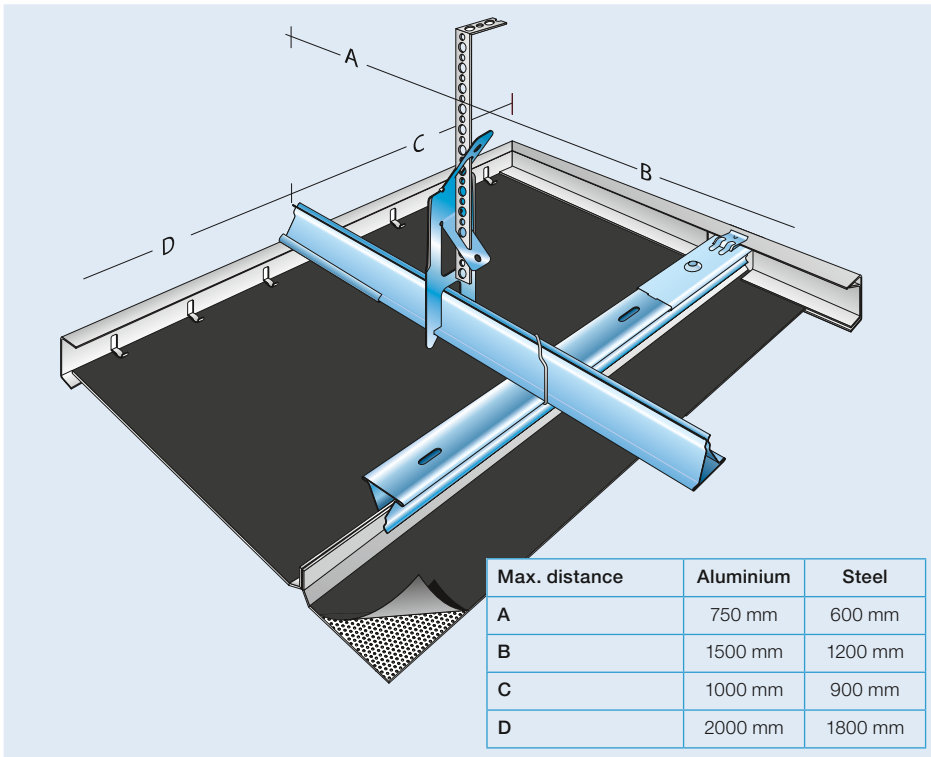
## Integrated System

Lighting and ventilation for the tiles are designed as integral parts of the ceiling.



## Installation of DAMPA® Clip-In Tile

The installation of DAMPA Clip-In Tiles, with or without bevelled edge, in a concealed suspension system creates a flat and uniform ceiling surface.



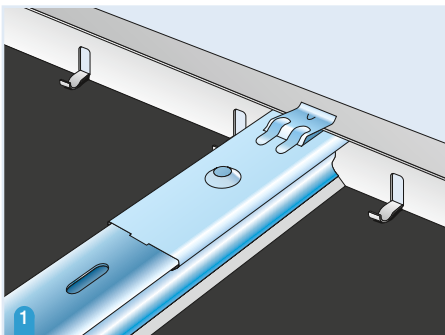
The tiles are secured to the carriers – without the use of tools. If necessary, it is possible to remove and reinstate individual tiles by means of a simple dismantling tool. The suspension system is not related to specific modules and creative combinations are possible using different tile sizes.

### Installation

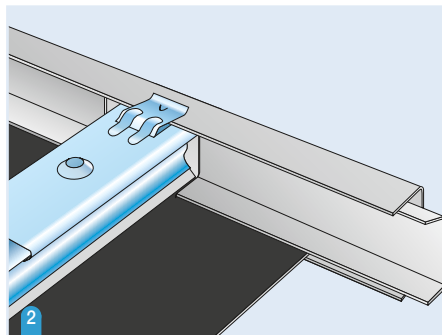
A primary grid system is recommended to maintain maximum rigidity of the ceiling construction. This will also minimise the number of hangers and provide for greater flexibility during installation.

After installation of the edge trims, the primary grid upper carriers are installed and the lower carriers are secured to the upper ones using coupling clips. Perimeter cut tiles should be larger than half a tile.

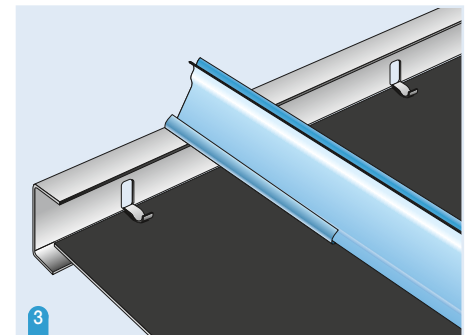
It may be necessary to provide additional support in close proximity to other integrated components, e.g. lighting and ventilation, to avoid excessive ceiling deflection.



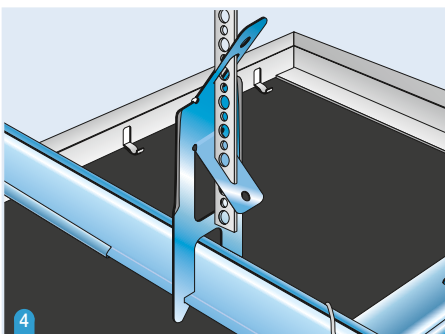
- 1 Edge Trim No. 11 is used to secure cut aluminium perimeter tiles. Carrier Splice No. 4 is secured to the top flange of the lower carrier. It also locates on the top flange of the edge trim to maintain the correct tile height.



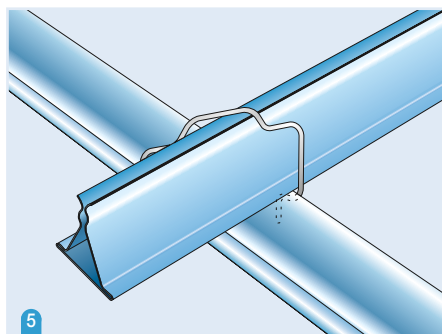
- 2 Cut steel perimeter tiles are supported using Edge Trim No. 36 and held in position with Wedge No. 4 as shown above. Alternatively, Shadow Gap Edge Trim No. 6 - held in position with Wedge No. 5 - can be used. Edge Trim No. 11 is used by direct installation.



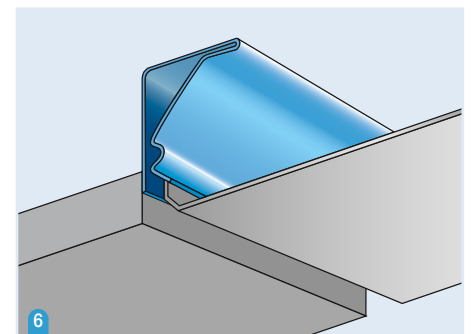
- 3 Carrier Splice No. 4 is also used to maintain the correct height of the primary grid upper carriers.



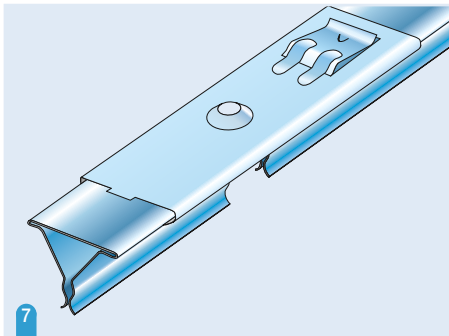
- 4 Adjustment Clip No. 4 can be secured to the primary or secondary carrier. The hanger is fastened to the soffit allowing a pull-out force of at least 2.5 times the hanger load.



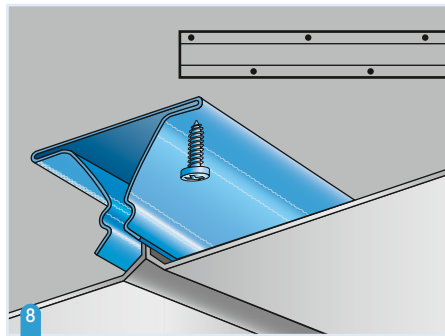
- 5 Coupling Clip No. 1 is used to connect the primary and secondary grid carriers.



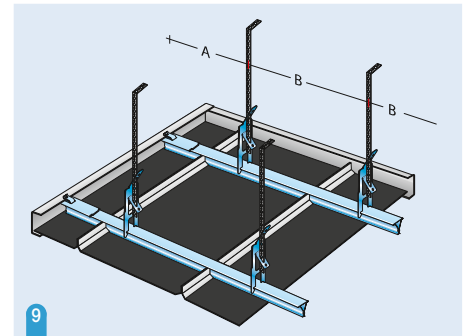
- 6 Carrier No. 10 is used as a perimeter detail to support full tiles.



- 7 Carrier Splice No. 4 is centrally positioned over the joints in the carriers. The hanger distance from the joints must not exceed 500 mm. A gap of 2-4 mm should be maintained to allow for expansion.

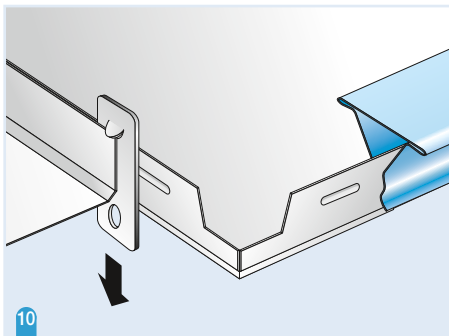


- 8 By direct installation Carrier No. 4 is fastened on alternately sides with suitable screws directly to the soffit and thus only Edge Trim No. 11 can be used.

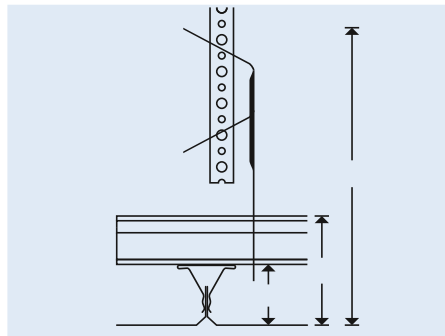


- 9 The single system can also be used. It consists of parallel carriers. Each carrier is supported by hangers.

Max. distance	Aluminium	Steel
A	1000 mm	900 mm
B	2000 mm	1800 mm



- 10 It is possible to remove and reinstate individual tiles anywhere in the ceiling. To remove, insert the dismantling tool up into the tile joint close to the corner and pull down gently.



- Minimum Constructional Height**  
The suspended DAMPA® Clip-In Tiles have a minimum constructional height of 188 mm. The minimum constructional height of DAMPA® Clip-In Tiles installed direct to the soffit is 38 mm.

### Floating Ceiling Areas

As perimeter solution Carrier No. 10 is used for full tiles. Edge Trim No. 11 is used for cut tiles.

In the primary grid system both upper and lower carriers are secured by means of screws or pop rivets to the edge solution.

To secure stability the maximum distance from the edge solution to the upper carrier must not exceed 200 mm.

## Modules

### DAMPA CLIP-IN/ALUMINIUM

- Module 300 × 600 mm, material thickness 0.7 mm
- Module 500 × 500 mm, material thickness 0.7 mm
- Module 600 × 600 mm, material thickness 0.7 mm
- Module 24 × 24 inch, material thickness 0.7 mm

Product	Average Consumption	Packing
Carrier No. 4	2.00 m/sq. m	10 units/bundle
Carrier Splice No. 4	1.20 units/sq. m	250 units/box
Coupling Clip No. 1	1.00 unit/sq. m	200 units/box
Adjustment Clip No. 4	0.50 unit/sq. m	250 units/box
Hanger No. 5 (suspended 500 mm)	0.25 m/sq. m	100 m/coil
Edge Trim No. 11	1.00 m/sq. m	10 units/carton

#### Module 300 × 300 mm, material thickness 0.5 mm

Product	Average Consumption	Packing
Carrier No. 4	4.00 m/sq. m	10 units/bundle
Carrier Splice No. 4	2.20 units/sq. m	250 units/box
Coupling Clip No. 1	2.00 units/sq. m	200 units/box
Adjustment Clip No. 4	0.50 unit/sq. m	250 units/box
Hanger No. 5 (suspended 500 mm)	0.25 m/sq. m	100 m/coil
Edge Trim No. 11	1.00 m/sq. m	10 units/carton

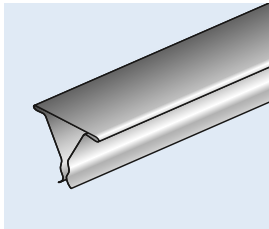
### DAMPA CLIP-IN/STEEL

- Module 300 × 600 mm, material thickness 0.5 mm
- Module 500 × 500 mm, material thickness 0.5 mm
- Module 600 × 600 mm, material thickness 0.5 mm

Product	Average Consumption	Packing
Carrier No. 4	2.25 m/sq. m	10 units/bundle
Carrier Splice No. 4	1.60 units/sq. m	250 units/box
Coupling Clip No. 1	1.10 units/sq. m	200 units/box
Adjustment Clip No. 4	0.60 unit/sq. m	250 units/box
Hanger No. 5 (suspended 500 mm)	0.30 m/sq. m	100 m/coil
Edge Trim No. 36 / Shadow Gap Edge Trim No. 6	1.00 m/sq. m	10 units/carton
Wedge No. 4 / No. 5	2.85 m/sq. m	200 units/box

#### Module 300 × 300 mm, material thickness 0.5 mm

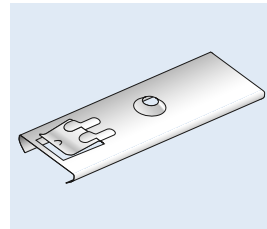
Product	Average Consumption	Packing
Carrier No. 4	4.25 m/sq. m	10 units/bundle
Carrier Splice No. 4	2.30 units/sq. m	250 units/box
Coupling Clip No. 1	2.10 units/sq. m	200 units/box
Adjustment Clip No. 4	0.60 unit/sq. m	250 units/box
Hanger No. 5 (suspended 500 mm)	0.30 m/sq. m	100 m/coil
Edge Trim No. 36 / Shadow Gap Edge Trim No. 6	1.00 m/sq. m	10 units/carton
Wedge No. 4 / No. 5	2.85 m/sq. m	200 units/box



**Carrier No. 4**

Size: 29 x 35 x 4000 mm

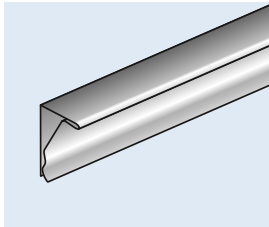
Material: Galvanised steel



**Carrier Splice No. 4**

Size: 12 x 40 x 110 mm

Material: Galvanised steel

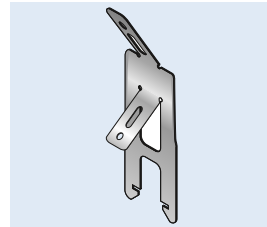


**Carrier No. 10**

Size: 33 x 18 x 4000 mm

Material: Galvanised steel

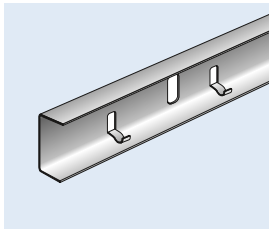
Finish: Painted



**Adjustment Clip No. 4**

Size: 38 x 50 x 160 mm

Material: Galvanised spring steel

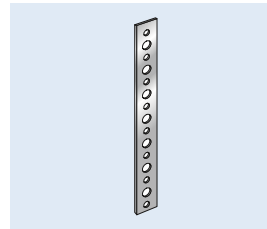


**Edge Trim No. 11**

Size: 15 x 38 x 15 x 4000 mm

Material: Galvanised steel

Finish: Painted

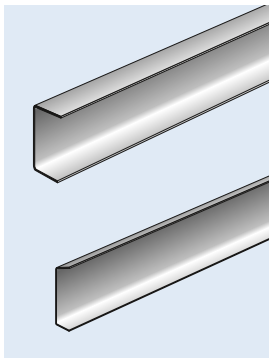


**Hanger No. 5**

Size: 1 x 14 mm

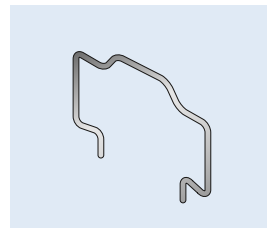
Length: 100 m

Material: Galvanised steel



**Shadow Gap  
Edge Trim No. 6**

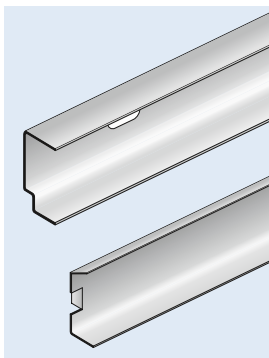
Also concave or convex  
Size: 20 x 38 x 14 x 4000 mm  
Shadow gap: 6 x 9 mm  
Material: Galvanised steel  
Finish: Painted



**Coupling Clip No. 1**

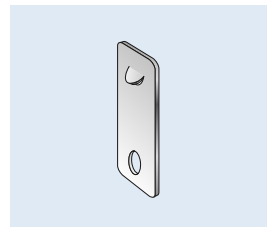
Size: 40 x 53 mm

Material: 2 mm  
galvanised spring steel



**Edge Trim No. 36**  
Also concave or convex  
Size: 15 x 38 x 15 x 4000 mm  
Material: Galvanised steel  
Finish: Painted

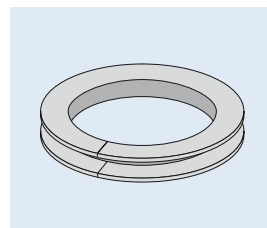
**Wedge No. 4**  
Size: 36 x 15 x 274 mm  
Material: Galvanised steel



**Dismantling Tool**

Size: 75 x 25 mm

Material: 0.3 mm spring steel



**Pillar Ring**

Size: 15 x 16 x 15 mm

Diameter: Min. 200 mm

Material: Aluminium

Finish: Painted

We reserve the right to alter described material without prior notification.

