

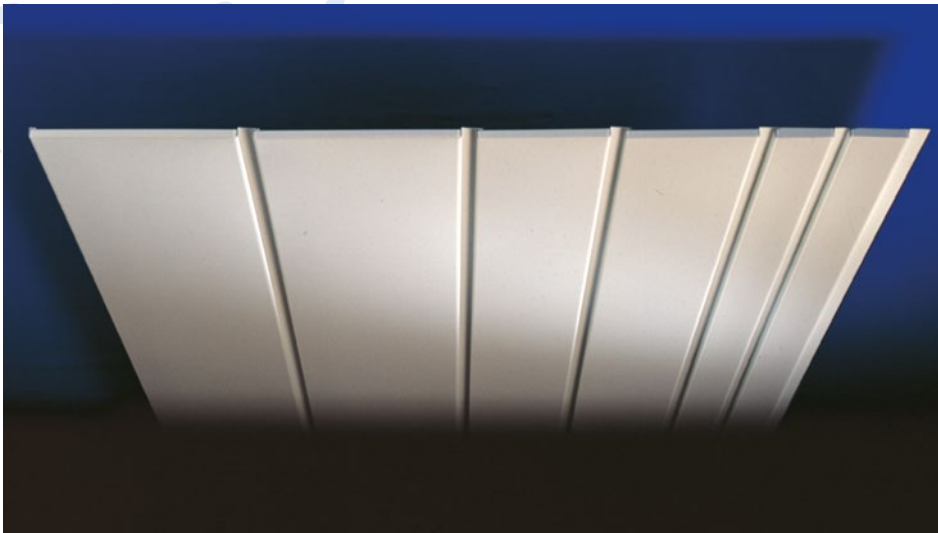


DAMPA® D-10/100/200/300 PANEL

The opportunity of various individual designs

DESIGN DIVERSITY WITH DIFFERENT PANELS

DAMPA® 10/100/200/300 ceiling system is a series of different types and modules. Each type of unit is fitting the same type of modular carrier giving the opportunity of various individual combinations. The units are part of a complete ceiling system with concealed suspension suitable for both flat and curved surfaces. All types are clipped on from below without the use of tools and each unit can be removed and reinstated individually.



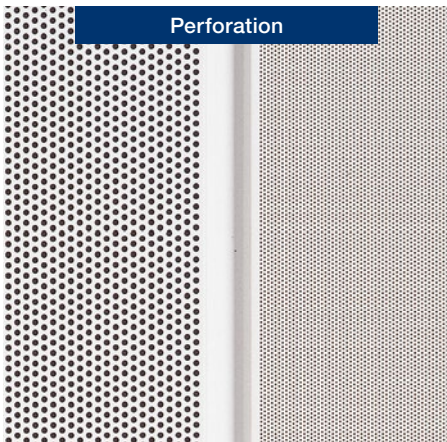
Design

DAMPA® 10 is a 100 mm module unit with sides slightly sloped outwards giving the module groove of the ceiling, a rounded and soft appearance.

DAMPA® 100/200/300 provides the option for individual design combining modules 100, 200 and 300 mm units in one ceiling. These units have vertical sides giving a more distinct module recess than that of DAMPA® 10.

Material

The DAMPA® 10/100/200/300 units are produced from aluminium coils on a rollforming plant securing uniformity.



Perforation

Various hole sizes and perforation patterns give a combination of perfect acoustic properties and aesthetic appearance.

Colours

With a choice of units in a specific colour or in a combination of different colours, the ceiling surface becomes part of the interior design.

Acoustic Felt

The combination of perforation and acoustic felt bonded to the reverse side of the units contributes to optimal acoustics. The acoustic felt prevents any dust fall-out from perforated ceiling types. The acoustic felt is black as standard and available in different colours on request.



Integrated System

Lighting and ventilation are designed as integral parts of the DAMPA® 10/100/200/300 ceiling system.

Suspension System

In the concealed suspension system the units are secured to the carriers – without the use of tools.

Quality

All DAMPA Ceiling Systems are manufactured, to high standards within close tolerances to ensure accurate, fast and reliable installation. The DAMPA Ceiling Systems are produced according to DAMPA's Quality Management System.



Modules

The same suspension system is used for all types of modules. This increases the number of creative combination possibilities.

DAMPA® 10:	Module 100 mm
DAMPA® 100:	Module 100 mm
DAMPA® 200:	Module 200 mm
DAMPA® 300:	Module 300 mm

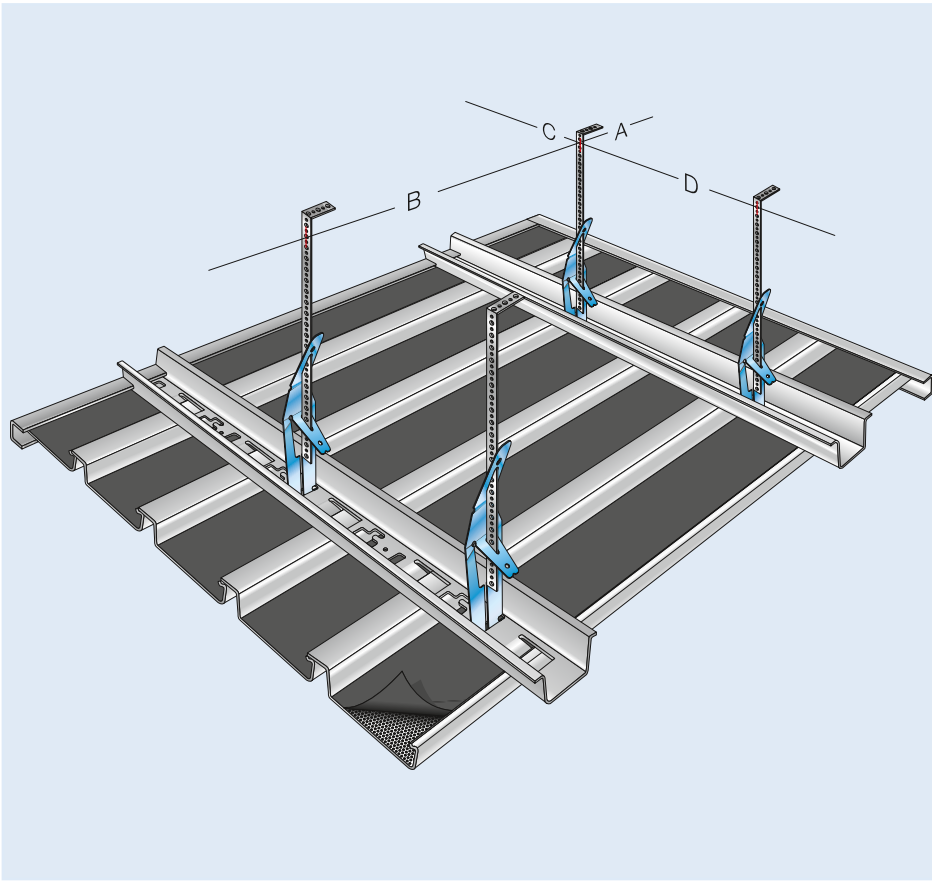
All types are 15 mm high and have a groove of 20 mm between the units.

The DAMPA® 200/300 units are as standard end closed, whereas DAMPA® 10/100 units are supplied without end closing.

Panels in length from 600 to 6000 mm are delivered as standard.

Installation of DAMPA® 10/100/200/300

Modular Carrier No. 40 supports all types of ceiling units.
The carriers are suspended by adjustment clips and perforated hangers.



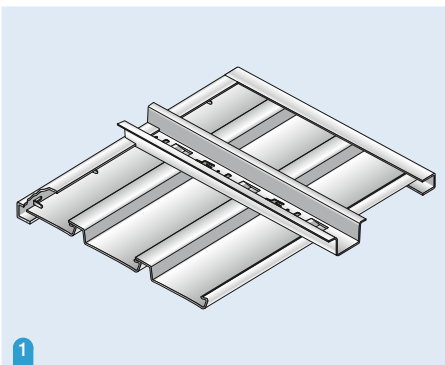
After fixing of the perimeter trims, the modular carriers are suspended.

When using either edge trims or angle runners, a slot is cut at the ends of the modular carriers to splice into the upper flange of the edge trim or the horizontal flange of the angle runner.

The first and last ceiling units should ideally be greater than half their module width.

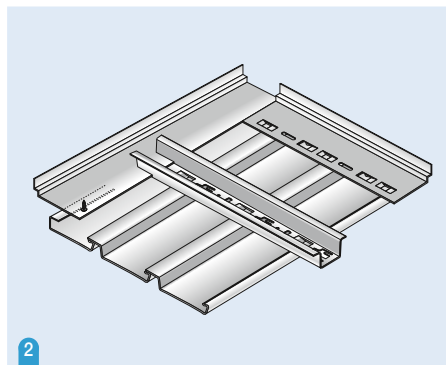
When using angle runners or open edge details, a leading edge return unit should be ordered as the first ceiling or it can be formed on site.

Max. distance	Aluminium	Steel
A (open edge detail)	100 mm	100 mm
A (edge trim)	300 mm	
B	1600 mm*	1350 mm
C	300 mm	300 mm
D	1600 mm**	1350 mm



- 1 Edge Trim Type 1 is used at right angles to the ceiling units and Edge Trim Type 2 parallel to support cut units.

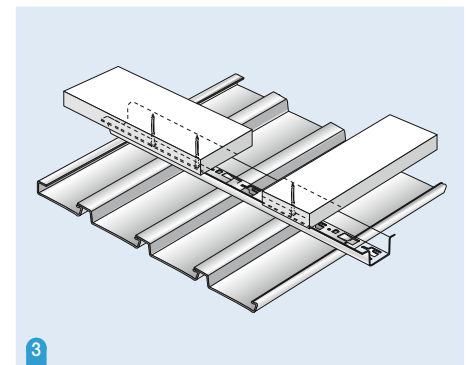
Edge trims are fastened to the wall at intervals of maximum 500 mm.



- 2 Angle Runner No. 1 with clips is used at right angles to the units (maximum distance to the first modular carrier 1600 mm) and Angle Runner No. 2 is used parallel to the units.

The narrow flange of the leading edge return unit is supported by panhead self tapping screws fixed into the angle runners at max. 1600 mm centres.

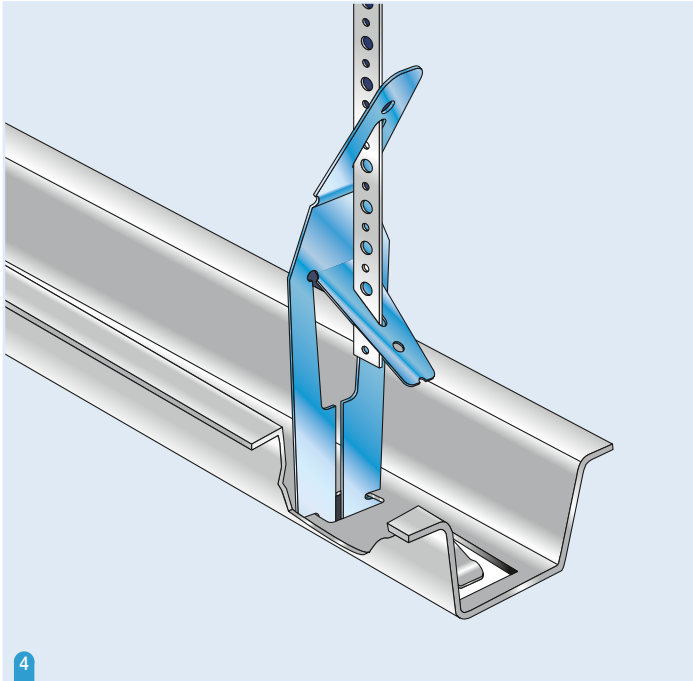
The angle runners are fastened to the wall at 500 mm intervals maximum.



- 3 To prevent movement of the ceiling, modular carriers are braced against the wall with timber battens as shown.

The first and the last modular carrier should be braced at right angles approx. every 2000 mm.

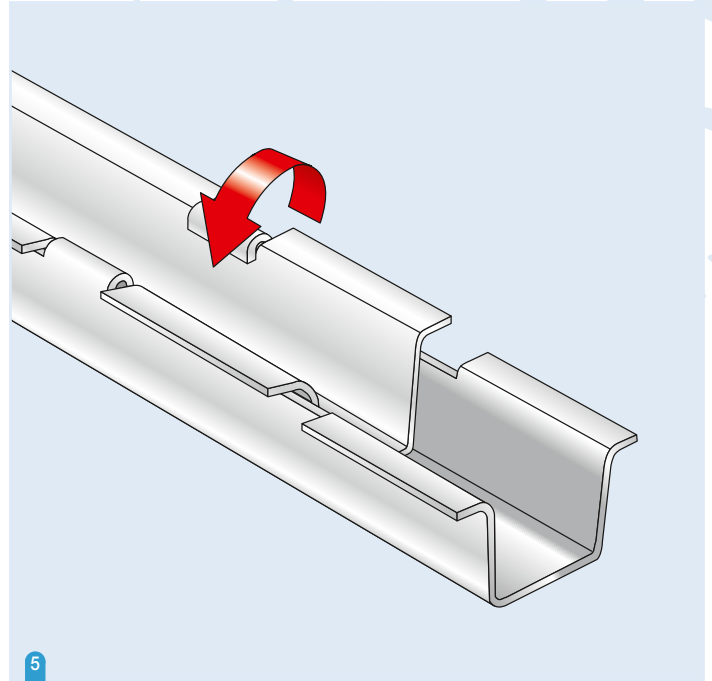
Align all the carrier clips accurately. The wide flange of the first ceiling unit should not be visible. Order a leading edge return unit from DAMPA.



4

Adjustment Clip No. 5 is located into the slots provided in the modular carrier. Minimum suspension height is 170 mm.

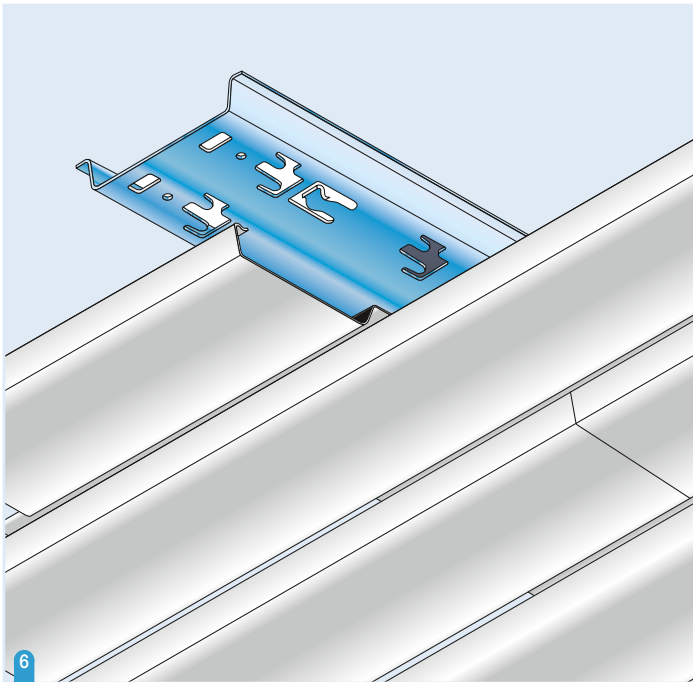
The pull-out force of the hanger must be at least 2.5 times the hanger load.



5

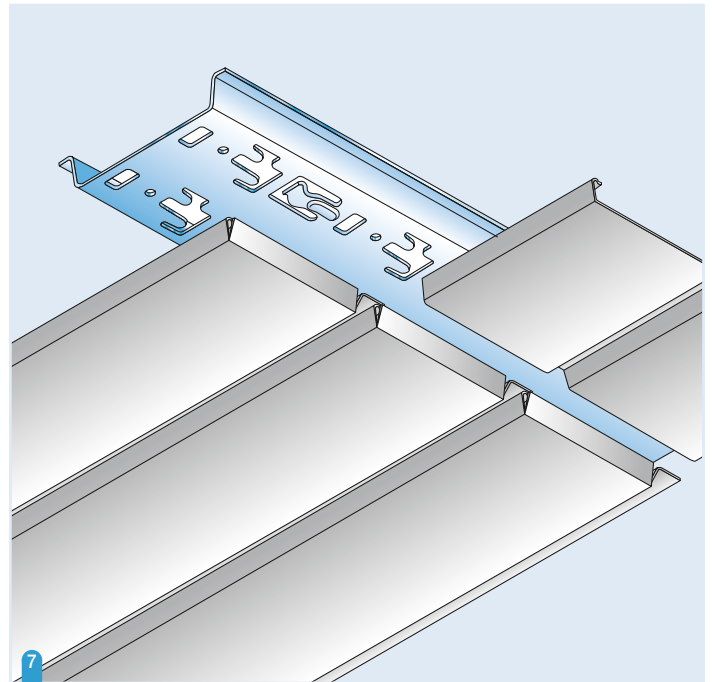
Modular Carrier No. 40 is provided with pre-punched lugs and cut-outs for modular splicing.

Locate the carrier ends so that the cut-outs overlap and lock together by folding the lugs inwards.



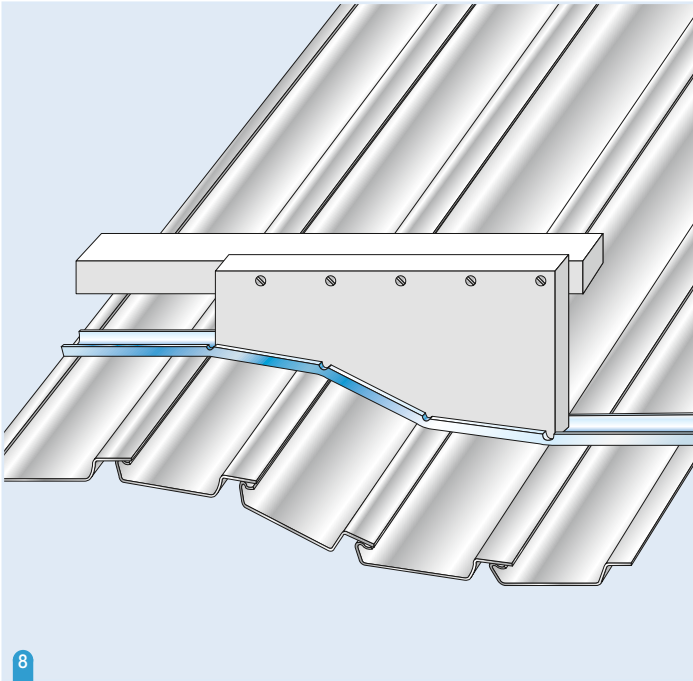
6

Closed joints are formed under Modular Carrier No. 43 (double carrier). Hangers must be fastened alternatively to both sides of the carrier to prevent twisting.



7

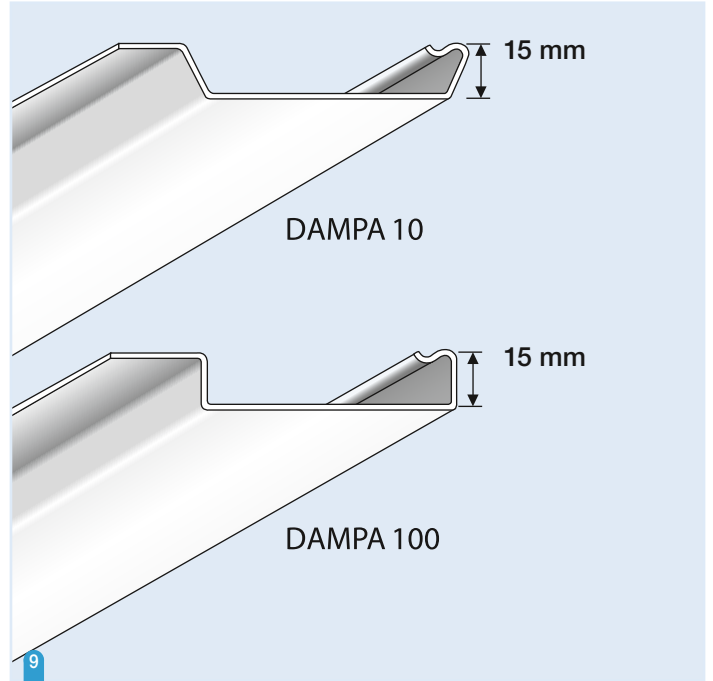
Featured joints are formed under Modular Carrier No. 43 (can be supplied painted). The maximum width of the open joint is 50 mm.



8

Concave or convex curved surfaces to a minimum radius of 500 mm can be achieved using Modular Carrier No. 44.

The carrier is fastened at 300 mm centres to pre-shaped timber or metal profiles spaced at 1350 mm centres maximum.



9

The two types of linear ceilings are both in 100 mm module and are clipped on Modular Carrier No. 40.

The DAMPA® 10 ceiling system is a stand-alone system with sides of the profile sloping outwards.

The DAMPA® 100 ceiling system, with right angle sides, can be integrated into a solution with DAMPA 200 and DAMPA 300 as part of a design combination or as adjustment profiles.

Dismantling

It is possible to remove and reinstall individual ceiling units without the use of tools. To remove, pull the unit towards you horizontally and simultaneously push the nearest adjacent one.

Modules

DAMPA® 10

Module 100 mm, material thickness 0.45 mm

Product	Average Consumption	Packing
Modular Carrier No. 40	1.10 m/sq. m	10 units/bundle
Adjustment Clip No. 5	0.85 unit/sq. m	350 units/box
Hang o. 5 (suspended 500 mm)	0.45 m/sq. m	100 m/coil
Edge Trim Type 1	0.50 m/sq. m	10 units/carton
Edge Trim Type 2	0.50 m/sq. m	10 units/carton

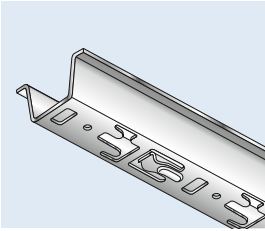
DAMPA® 100/200/300

Module 100 mm, material thickness 0.45 mm

Module 200 mm, material thickness 0.55 mm

Module 300 mm, material thickness 0.70 mm

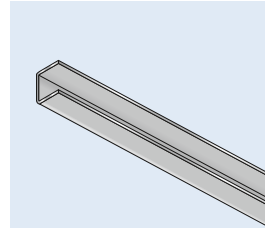
Product	Average Consumption	Packing
Modular Carrier No. 40	1.10 m/sq. m	10 units/bundle
Adjustment Clip No. 5	0.85 unit/sq. m	350 units/box
Hanger No. 5 (suspended 500 mm)	0.45 m/sq. m	100 m/coil
Edge Trim Type 1	0.50 m/sq. m	10 units/carton
Edge Trim Type 2	0.50 m/sq. m	10 units/carton



Modular Carrier No. 40

Size: 26 × 52 × 3900 mm

Material: Galvanised steel



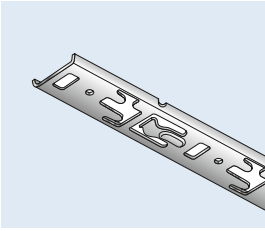
Edge Trim Type 1

Also concave or convex

Size: 15 × 16 × 15 × 3000 mm

Material: Aluminium

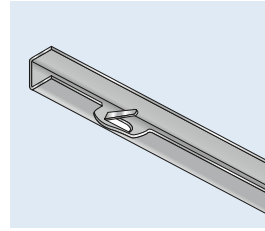
Finish: Painted



Modular Carrier No. 44

Size: 5.5 × 37 × 4000 mm

Material: Galvanised steel

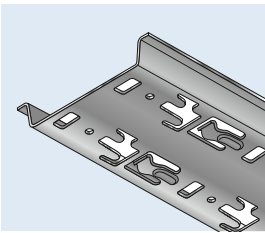


Edge Trim Type 2

Size: 15 × 16 × 15 × 4000 mm

Material: Aluminium

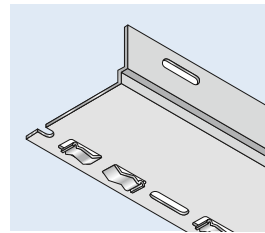
Finish: Painted



Modular Carrier No. 43

Size: 26 × 124 × 4000 mm

Material: Galvanised steel

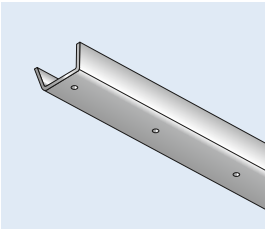


Angle Runner No. 1

Size: 38 × 80 × 4000 mm

Material: Galvanised steel

Finish: Painted black or white

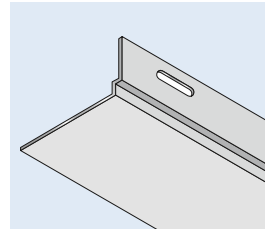


Splice No. 12

(for Modular Carrier No. 43)

Size: 20 × 36 × 321 mm

Material: Galvanised steel

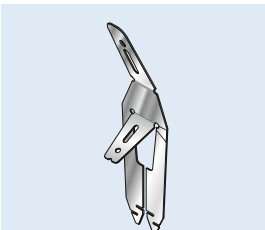


Angle Runner No. 2

Size: 38 × 80 × 4000 mm

Material: Galvanised steel

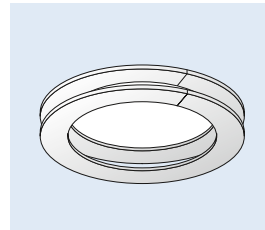
Finish: Painted black or white



Adjustment Clip No. 5

Size: 175 × 40 × 26 mm

Material: Spring steel



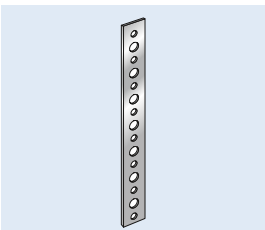
Pillar Ring

Size: 15 × 16 × 15 mm

Diameter: Min. 200 mm

Material: Aluminium

Finish: Painted



Hanger No. 5

Size: 1 × 14 mm

Length: 100 m

Material: Galvanised steel

We reserve the right to alter described material without prior notification

DAMPA®

DAMPA, DK-5690 Tommerup, Tel.: +45 63 76 13 00, dampa@dampa.dk, www.dampa.com
METALCOLOUR ASIA, 39368 Singapore, Tel.: +65 68 98 25 35, info@metalcolour.com, www.metalcolour.com