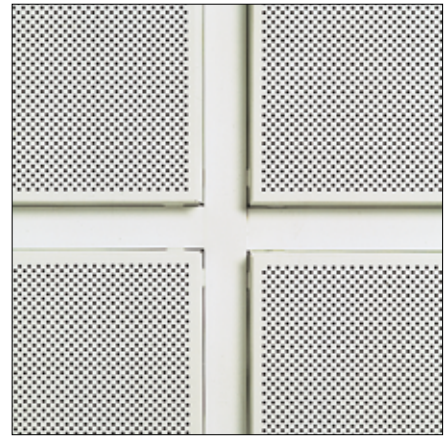




## DAMPA Lay-In Tile

The DAMPA Lay-In Tiles are installed in an exposed T-grid system. The characteristic look is created by the difference in level between the T-grid and the ceiling tiles. The shadow effect emphasises the square feature of the ceiling.



### Design

The DAMPA Lay-In Tiles are supplied in various heights (flat, 8, 12 and 30 mm) and the shadow effect differs according to the type of tile. The selected colours of the tiles and of the acoustic felt inlay combined with different perforation patterns offer innumerable design capabilities.

### Material

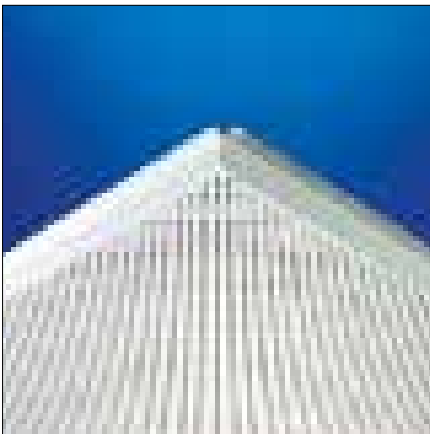
The tiles are produced on a tile press plant securing uniformity. They are available in steel or aluminium. For installation in areas with high humidity, aluminium is recommended.

### Perforation

Various hole sizes and perforation patterns in combination with the coloured acoustic felt add an extra dimension to the appearance of the ceiling.

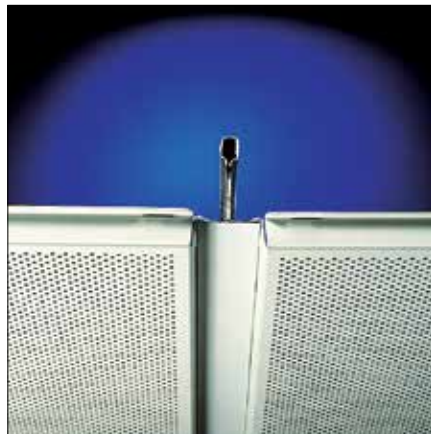
### Colours

With a choice of tiles in a specific colour or in a combination of different colours, the ceiling surface becomes part of the interior design.



### Acoustic Felt

The combination of perforation and acoustic felt bonded to the reverse side of the tiles contributes to optimal acoustics. The acoustic felt prevents any dust fall-out from perforated tiles. The acoustic felt is available in three different colours, i.e. white, black and blue.



### Suspension System

In the exposed system the tiles are very easy to "lay in" the 15 or 24 mm grid system – without the use of tools. For further details see "3.6 Installation of DAMPA Lay-In Tile".

### Integrated System

Lighting and ventilation for the tiles are designed as integral parts of the ceiling.

### Modules

The tiles are supplied in modules of 600 × 600 mm and 625 × 625 mm depending on the specific type of tile.

### Dismantling

It is possible to remove and restate individual tiles anywhere in the ceiling.

### Quality

The tiles are produced according to DAMPA's Quality Management System DS/ EN/ ISO 9001:2008.

Further information is available in chapters 5 and 6.

