

Munich Airport Extension of Terminal 2

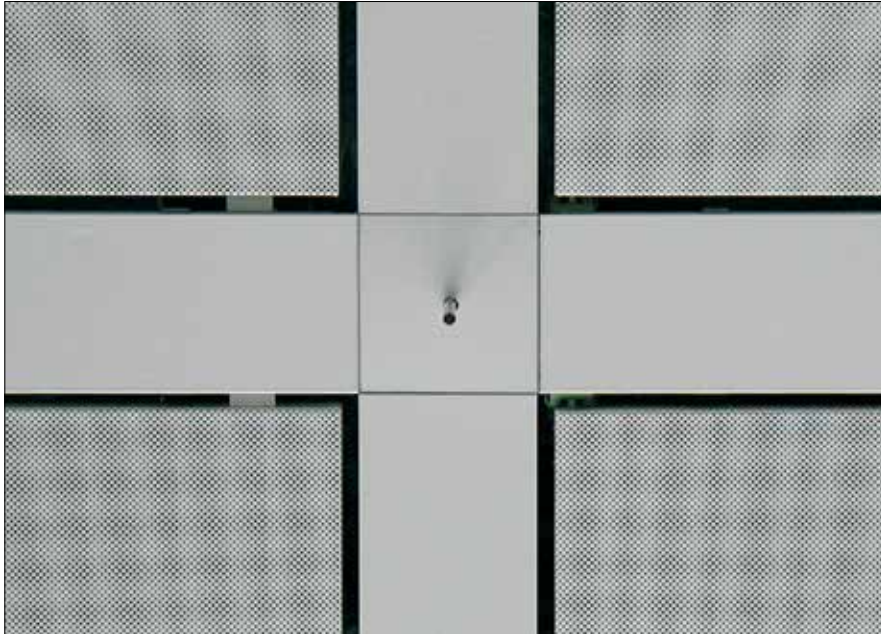
Cross bandraaster ceiling system.
Change in ceiling levels to accommodate the integration of the air extraction grilles.



Outside Terminal 2 building and departure gates. Execution: 2001-2003



Terminal 2: approx. 80.000 m²



Bandraster junction box



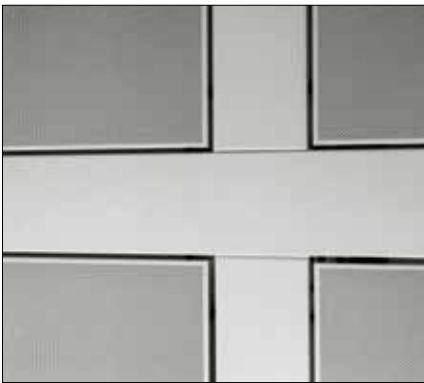
Chilled ceiling panel system containing copper cooling elements. Individually accessible without the use of tools, using a simple 'push & release' system.



Cross bandraster ceiling system



Cross bandraster ceiling system; module 1800 x 1800 mm.



Cross bandraster ceiling system, without junction boxes, using five panels per module.



Euro net Office Park, 25.000 m².
Luxemburg/Munschbach, Baumeisterhaus Luxembourg.



Cross bandraaster ceiling system, without junction boxes, using three panels per module.

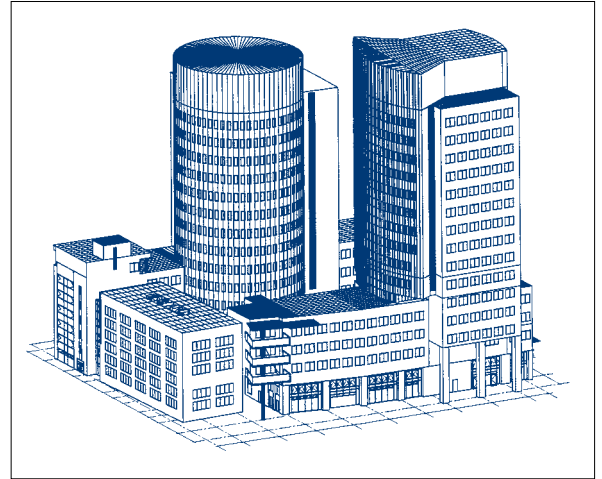


Cross bandraaster ceiling system;
module 1200 x 1200 mm.

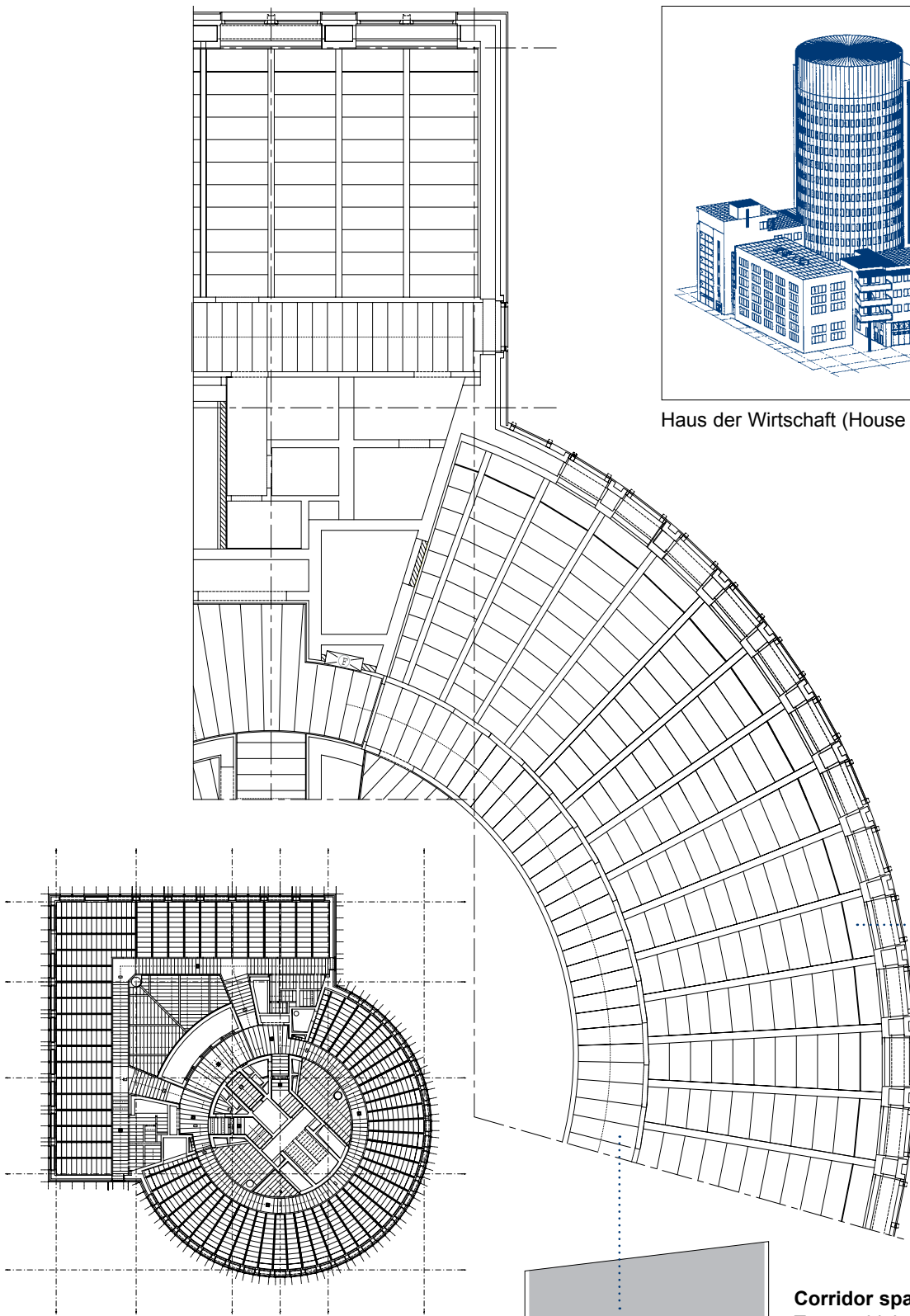


Intermediate cross bandraaster ceiling
system; module 600 x 1200mm using
one panel per module.

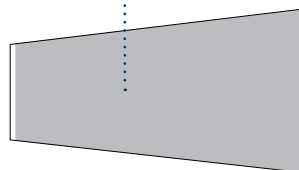
Special bandraster ceiling system using trapezoidal panels



Haus der Wirtschaft (House of Commerce), Offenbach.

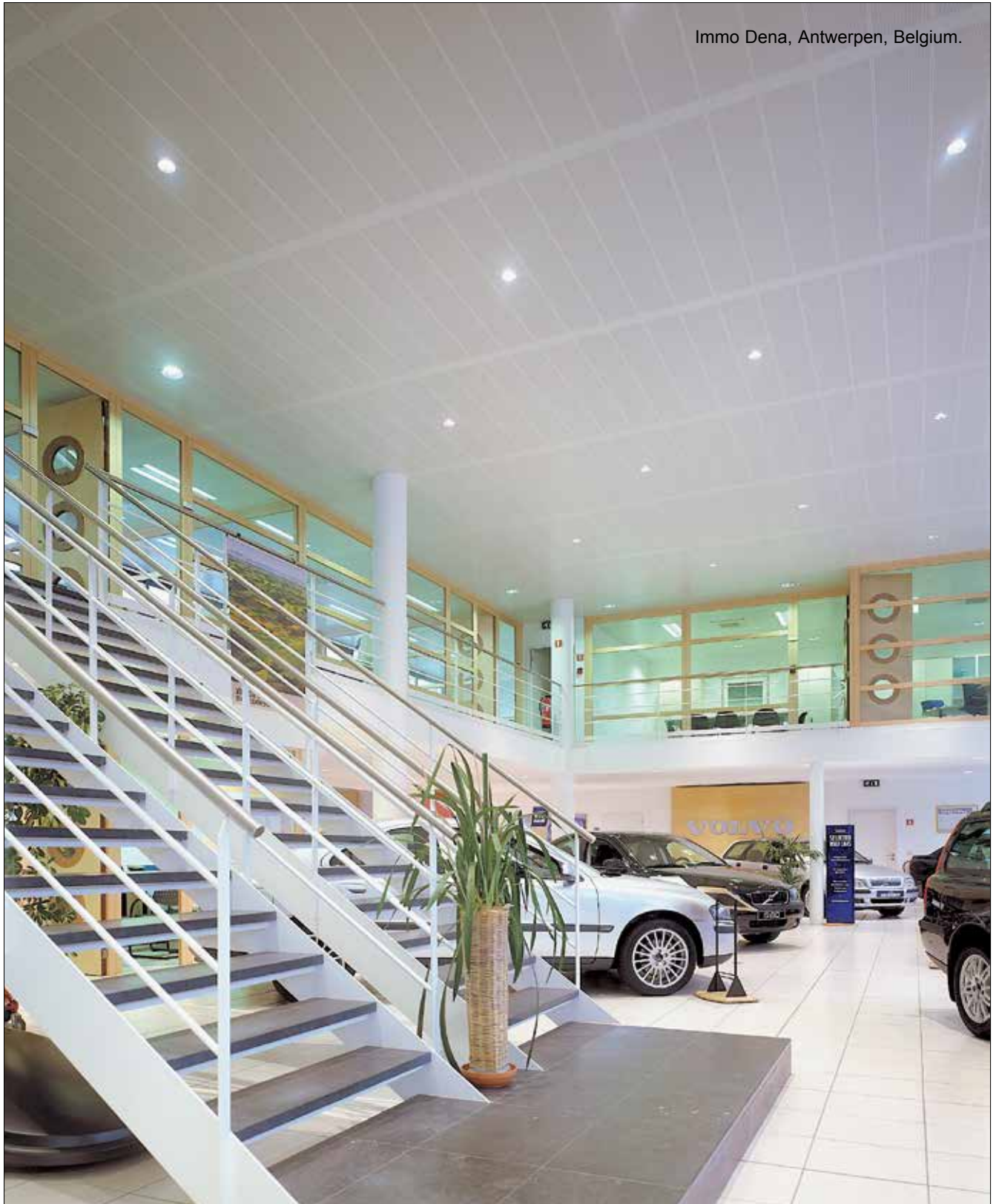


Office space:
Trapezoidal panels with the perforation continuing around the short side edges and plain borders on the long sides.



Corridor space:
Trapezoidal panels with the perforation continuing around the long side edges and plain borders on the short sides.

Parallel bandraaster ceiling system



Immo Dena, Antwerpen, Belgium.

Bandraaster ceiling system G2000; module 300 x 2000 mm.

Parallel bandraaster ceiling system G2000.



Detail showing column ring.



Parallel bandraaster ceiling system

Bandraaster ceiling system G2000; module 300 x 900/1800 mm.



i Reception

† Conference room



Fortis City Centre, 21.000 m²
Brussels, Belgium



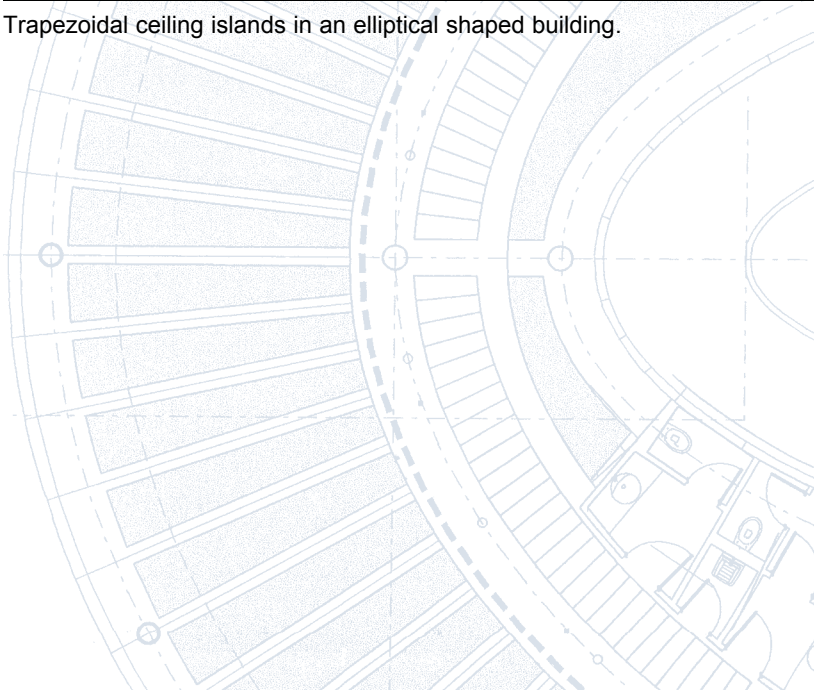
Detail of parallel bandraaster ceiling system G2000; module 300 x 900 mm.



Ceiling Islands

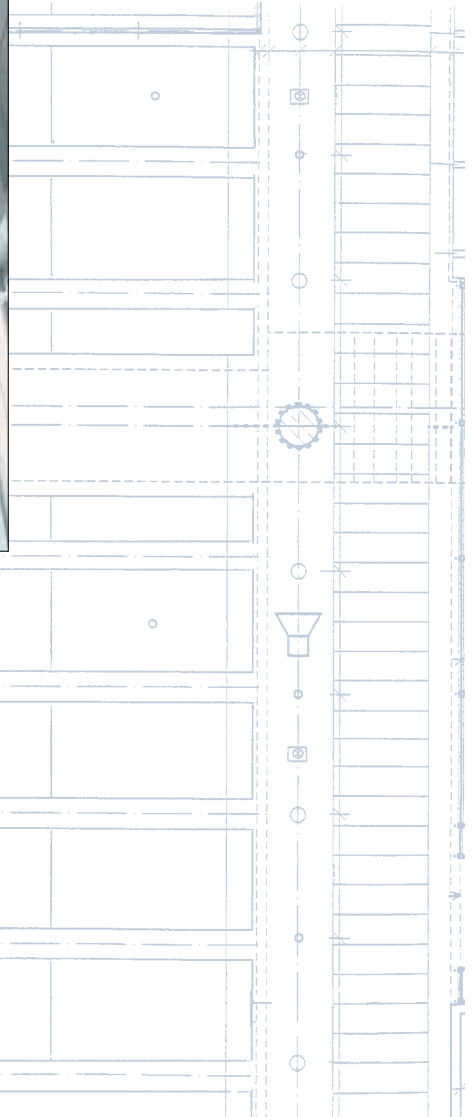


Trapezoidal ceiling islands in an elliptical shaped building.



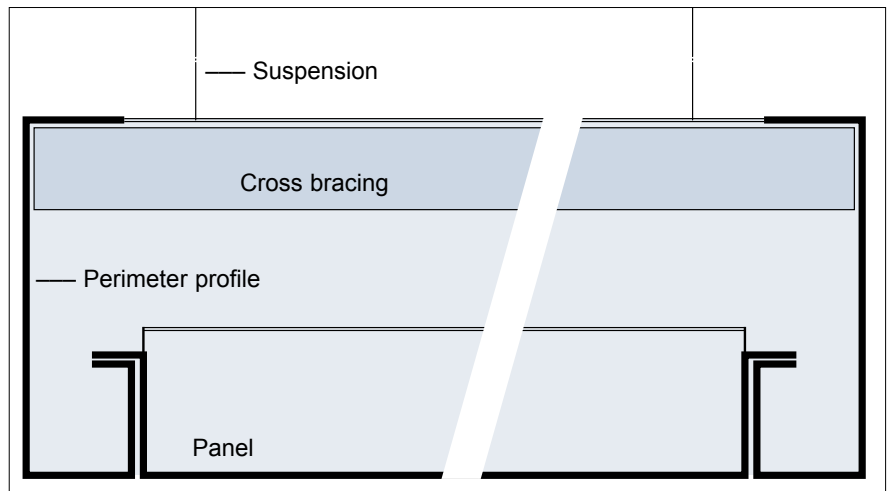
Stillwerk, Düsseldorf

Rectangular ceiling islands using two panels

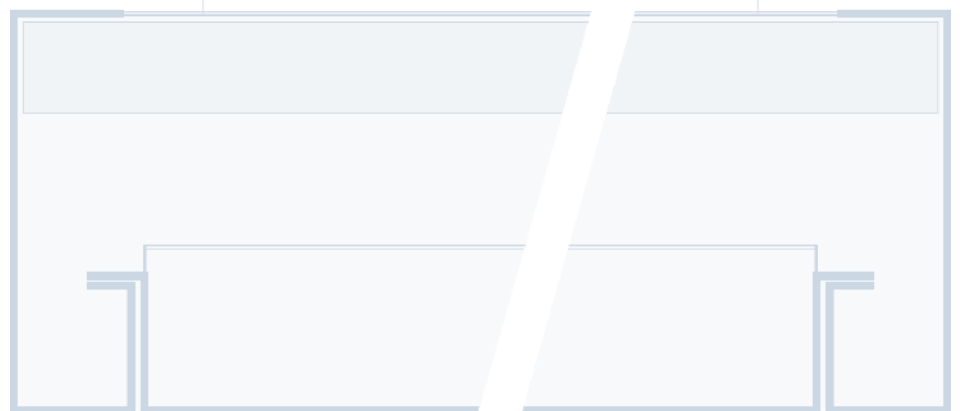


Horizontal rectangular ceiling islands.

Ceiling islands with visible perimeters



Ceiling islands with visible perimeters and concealed suspension.
 Available in various dimensions, ideal for creating individual suspended ceilings, acoustic regulators and chilled ceilings.



DAMPA[®]
Made in Denmark