



DAMPA® MARINE CEILING SYSTEMS

# DAMPA® Interval 190/10 - 290/10

Integrated ventilation in linear design

**DAMPA®**

 Made in Denmark

# DAMPA® Interval 190/10 - 290/10

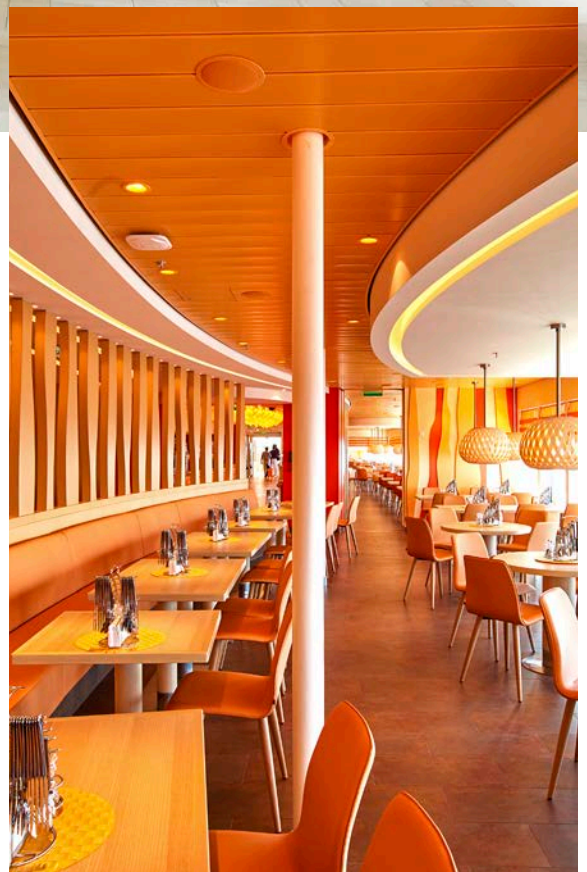
Enhance the depth and shadow effect,  
and comes with a wide range of design and functional options



## DAMPA® INTERVAL 190/10 - 290/10 FOR PUBLIC AREAS

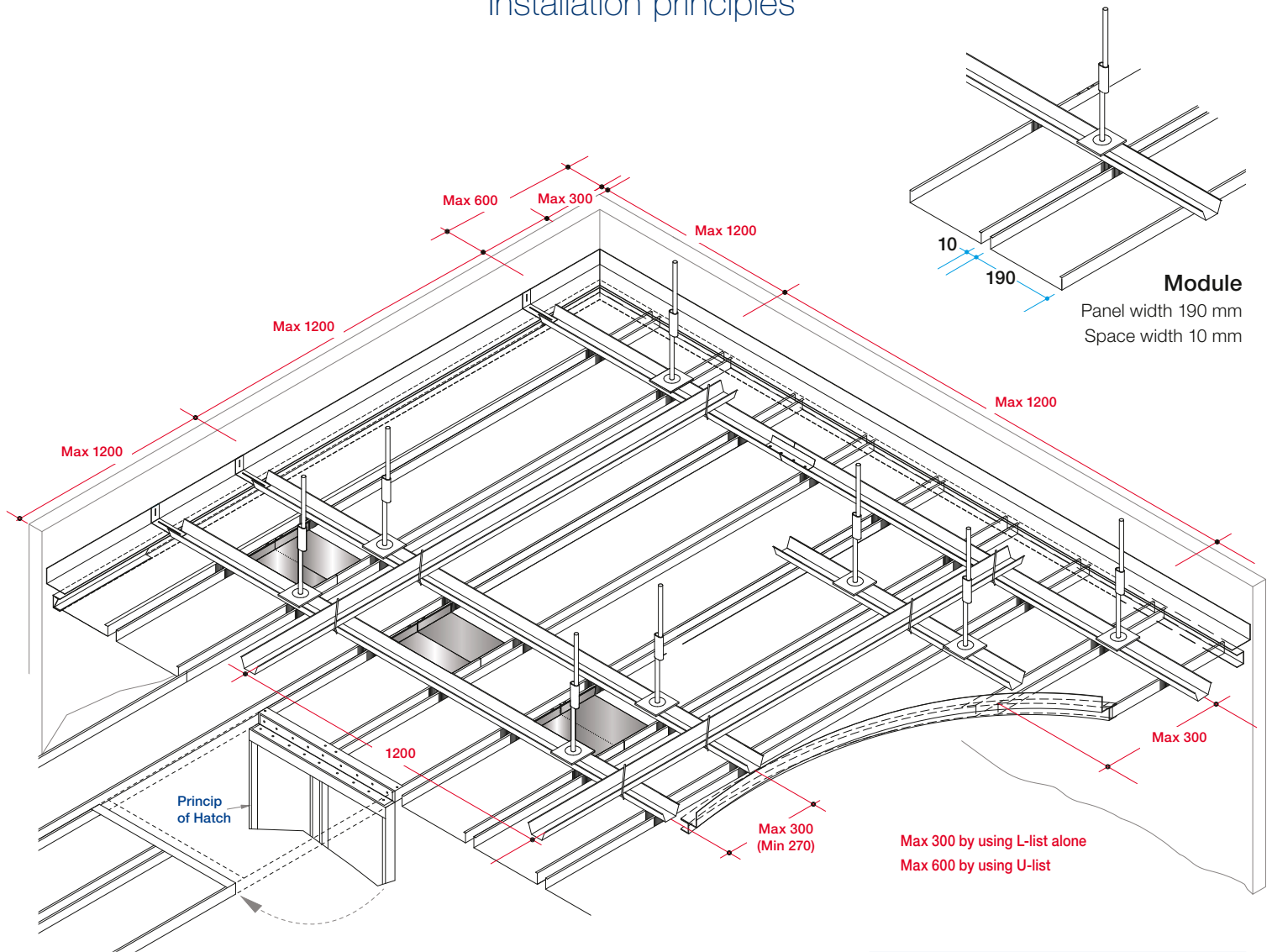
DAMPA® Interval 190/10 and 290/10 adds a minimalistic expression to the ceiling.

The open area between the panels is variable, allowing for a greater scope in relation to design, functionality and appearance of the ceiling.



# DAMPA® Interval 190/10 - 290/10

## Installation principles



### PRODUCT DESCRIPTION

The DAMPA® Interval 190/10 - 290/10 System is a Suspended Marine Ceiling System consisting of linear ceiling panels. Fast and efficient installation is assured, as ceiling panels are standard length or pre-cut in accordance with customer drawings and specifications.

By use of only a few basic components a functional and aesthetic ceiling can be designed to suit all types of areas.

### CEILING PANELS

The Interval 190/10 - 290/10 Ceiling Panels are made from pre-painted 0.7 mm aluminium.

The panels can be supplied perforated or plain, with acoustic inlay and mineralwool in polyethylen foil PE.

All panels are 26 mm high and are supplied without end closings as standard.

All Panels can be supplied in any specified length from 600 to 4000 mm. Less than 100 mm and up to 6000 mm can be made to order.

### COLOURS AND SURFACES

DAMPA® Interval 190/10 and 290/10 Ceiling Panels are pre-painted with non-toxic polyester paint prior to rollforming, resulting in a superior finish and excellent durability, delivered with or without protection foil.

#### Standard Colour White

DAMPA's standard colour is: Pure White matt No. 4747-2 similar to RAL 9010

#### Special Colours

Almost any colour is available on request in the following gloss levels (at 60°), designated by code numbers 1, 2 or 5:

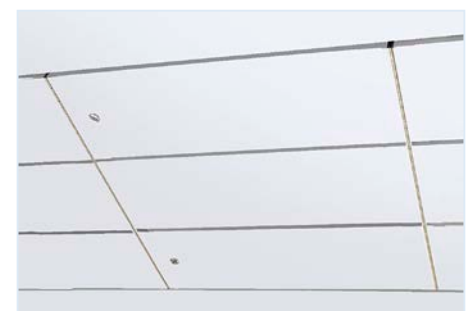
xxx-1, gloss 80 +/- 5

xxx-2, matt 10 +/- 3

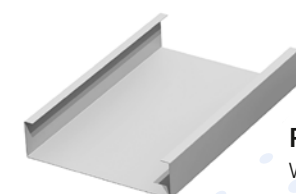
xxx-5, anti-reflection/textura 0-7

(developed by DAMPA for wheelhouse ceilings).

Special colour requests will be converted to the nearest NCS (Natural Colour System) colour code.

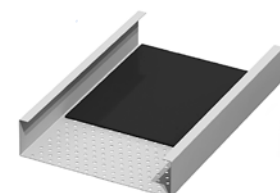


600 x 600 mm Access Hatch for DAMPA® Interval 190/10 - 290/10 with 2 latches



#### Panel

Without perforation and acoustic inlay

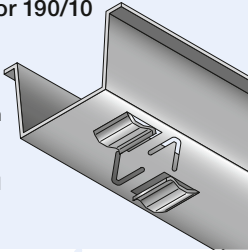


#### Panel

With 1.0 or 1.8 mm perforation and acoustic inlay

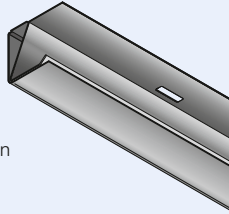
### Modular Carrier for 190/10

Height: 27 mm  
 Width: 51 mm  
 Length: 4000 mm  
 Weight: 0.75 kg/lin.m  
 Material: 1.0 mm galvanised steel painted in black



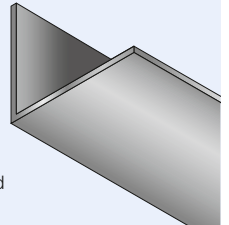
### Edge Trim No. 26

Height: 27 mm  
 Width: 25 mm  
 Length: 4000 mm  
 Weight : 0.80 kg/lin.m  
 Material: 0.6 mm galvanised steel, painted in ceiling colour



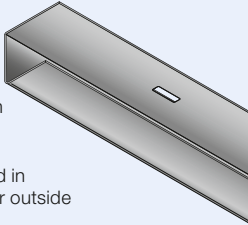
### Edge Trim No. 13

Height: 40 mm  
 Width: 55 mm  
 Length: 4000 mm  
 Weight : 0.80 kg/lin.m  
 Material: 1.0 mm galvanised steel, stove-enamelled black



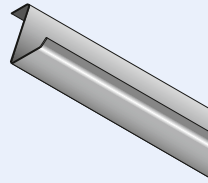
### Edge Trim No. 27

Height: 27 mm  
 Width: 25 mm  
 Length: 4000 mm  
 Weight : 0.65 kg/lin.m  
 Material: 1.0 mm galvanised steel, painted in ceiling colour outside



### Clip Inlay No. 3

Height: 25.5 mm  
 Width: 24.5 mm  
 Length: 2000 mm  
 Weight: 0.15 kg/lin.m  
 Material: 0.3 mm galvanised steel

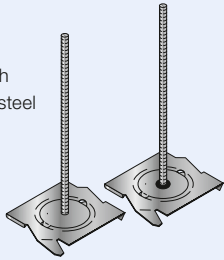


### Suspension No. 1

Total height: 150 mm  
 Weight: 0.05 kg/each  
 Material: Galvanised steel

### Suspension No. 3

No. 1 with vibration absorbing rubber bush



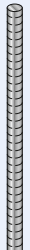
### Rod Clip No. 2

Total length: 50 mm  
 Weight: 0.015 kg/each  
 Material: Galvanised steel



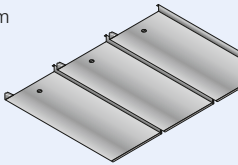
### Threaded Rod M8

Diameter: 8 mm  
 Length: 200, 300, 400, 500, 600 and 2000 mm  
 Weight: 0.30 kg/lin.m  
 Material: Galvanised steel



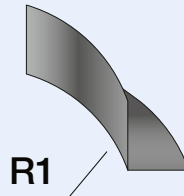
### Access Panel

Modul: 3 x 190/10 mm  
 Length: 596 mm  
 Weight: 0.75 kg/lin.m  
 Material: Aluminium painted in ceiling colour



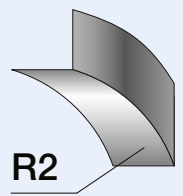
### Edge Trim No. 13 R1 Outside

Height: 40 mm  
 Width: 55 mm  
 Length: 4000 mm  
 Weight : 0.80 kg/lin.m  
 Material: Galvanised steel, painted in ceiling colour



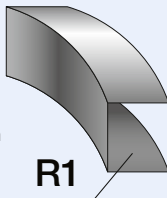
### Edge Trim No. 13 R1 Inside

Height: 40 mm  
 Width: 55 mm  
 Length: 4000 mm  
 Weight : 0.80 kg/lin.m  
 Material: Galvanised steel, painted in ceiling colour



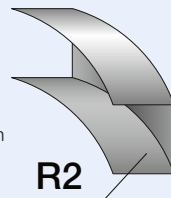
### Edge Trim No. 27 R1 Outside

Height: 28 mm  
 Top width: 22 mm  
 Bottom width: 20 mm  
 Length : 4000 mm  
 Material: Galvanised steel, painted in ceiling colour



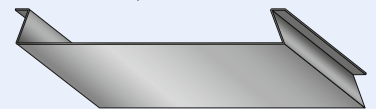
### Edge Trim No. 27 R2 Inside

Height: 28 mm  
 Top width: 22 mm  
 Bottom width: 20 mm  
 Length : 4000 mm  
 Material: Galvanised steel, painted in ceiling colour



### Spline

Height: 22.7 mm  
 Width: 187.5 mm  
 Length: 250 mm  
 Material: Aluminium painted in black



## Technical solutions and support

All the way through the project phase, from the design phase to the finished product, we support you with consultancy.

We combine the expertise of our own engineers, completing detailed drawings of your project, with the support from our experienced marine customer service team.

Fast and efficient installation is assured, as ceiling panels are supplied 'pre-cut' in accordance with customer drawings and specifications. All ceiling panels are pre-cut to fit actual room dimensions.

## Identification and handling on site

DAMPA meets your specific requirements of packaging.

DAMPA Panels are as standard supplied in pre-cut length according to specification to suit actual room dimensions.

Ceiling unit boxes are labelled with contents, ceiling unit length as well as deck and room number for easy identification and handling on site.

## Acoustics

DAMPA's metal ceilings ensure an exceptional acoustic environment, adjustable to varying demands on reverberation times.

## Certificates and approvals

DAMPA's products are continuously tested according to international requirements, such as fire stability and integrity. Certificates and approvals from leading classification societies have been achieved

## Functionality and Quality

All DAMPA® Marine Ceiling Systems are manufactured to high standards within close tolerances to ensure accurate, fast and reliable installation.

DAMPA® Marine Ceiling Systems are produced according to DAMPA's Quality Management System.



DAMPA, DK-5690 Tommerup, Tel.: +45 63 76 13 00, [dampa@dampa.dk](mailto:dampa@dampa.dk), [www.dampa.com](http://www.dampa.com)